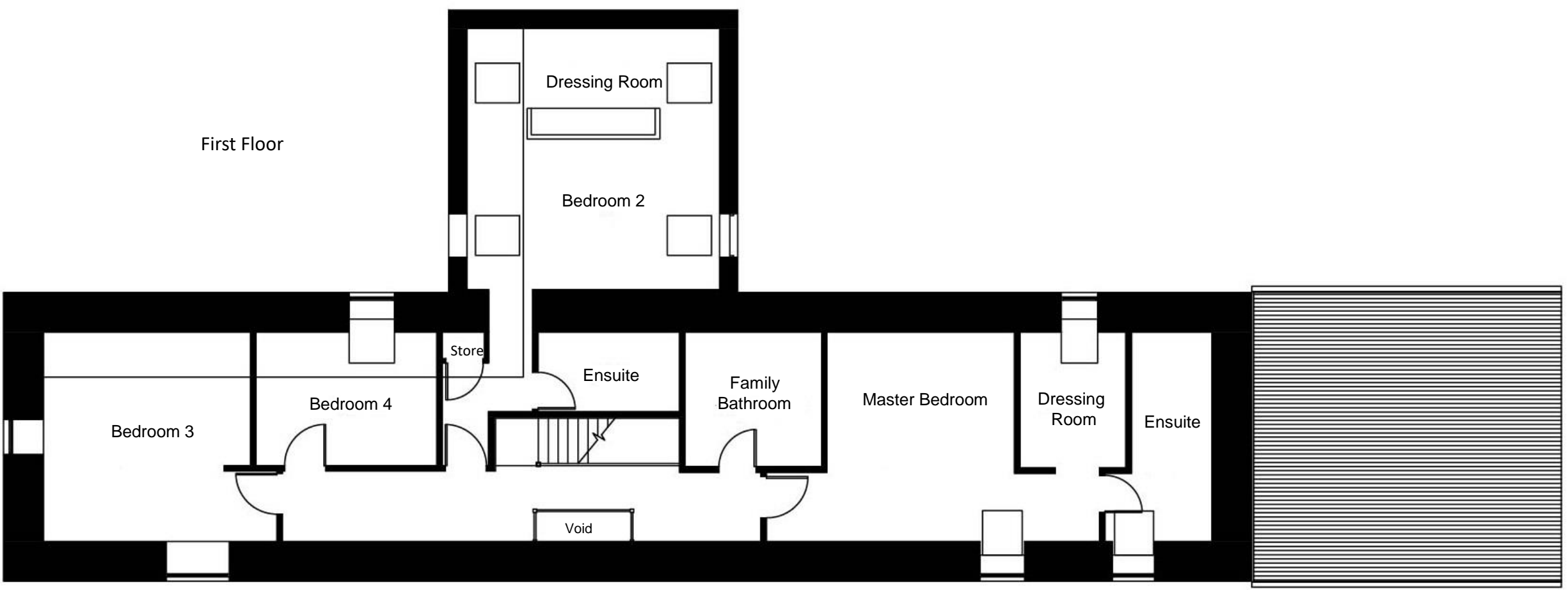
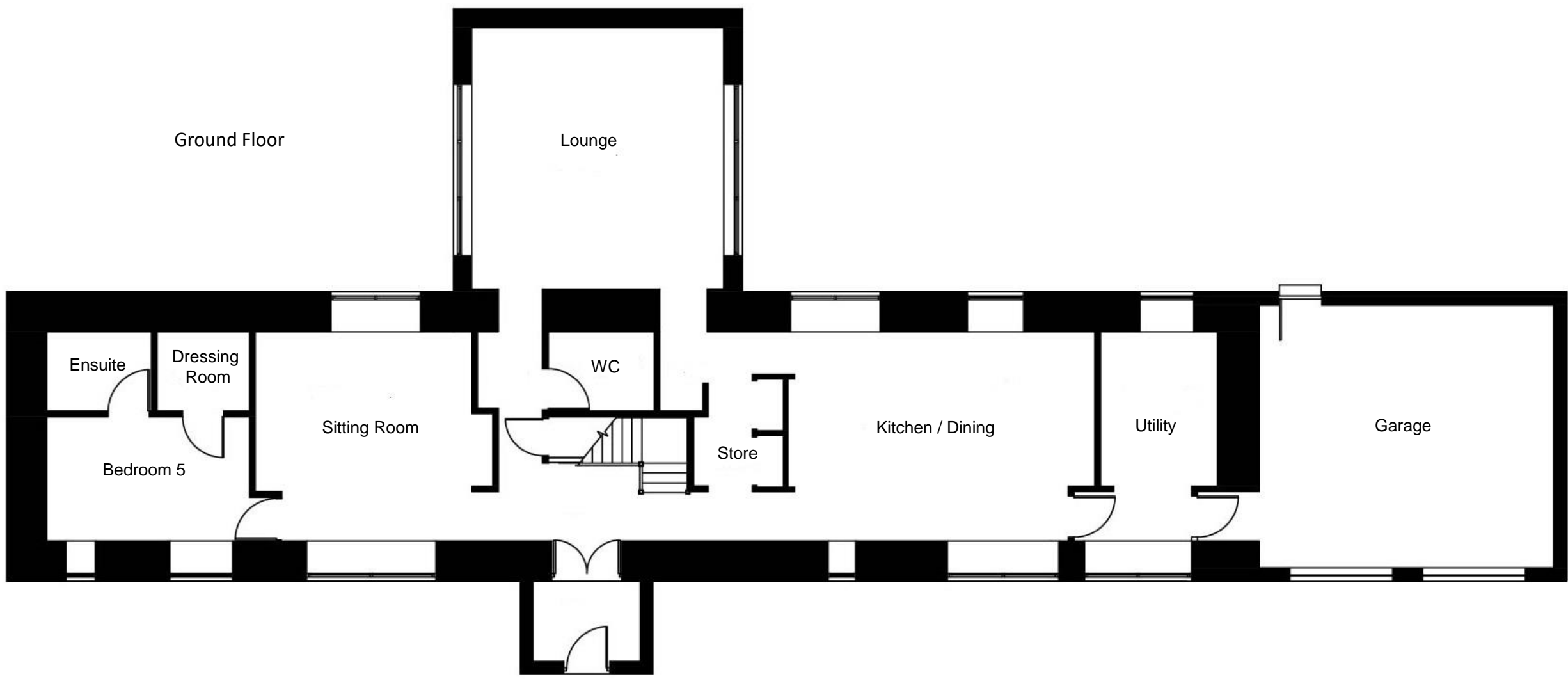




Broadfold Barn, Plot 1 Floor area 364 m2

Plot size 1051 m2 / 0.26 acres



BROADFOLD BARN, PLOT 1 - Ground Floor	
Kitchen / Dining	7m x 4.9m
Lounge	6m x 5.8m
Sitting Room	4.9m x 4.9m
Utility	4.9m x 2.6m
Bedroom 5	4.6m x 2.9m
Dressing Room	2.1m x 1.8m
Ensuite	2.4m x 1.8m
WC	2.4m x 1.8m
Garage	6m x 5.9m

BROADFOLD BARN, PLOT 1 - First Floor	
Master Bedroom	4.9m x 4.3m
Master Dressing Room	3.1m x 2.2m
Master Ensuite	4.2m x 1.8m
Bedroom 2	5.8m x 3.5m
Bedroom 2 Dressing Room	5.8m x 2.4m
Bedroom 2 Ensuite	3m x 1.8m
Bedroom 3	5.8m x 4.6m
Bedroom 4	4.2m x 3.1m
Family Bathroom	3.1m x 3.1m

All plans, images and dimensions are for illustrative purposes only, and are intended to convey concept and vision of development/property. These may alter as work progresses and do not necessarily represent a true and accurate depiction of finished product and specification. These are not intended to form part of any contract.